

Self-evaluation Summary Dashboard

Produce custom dashboards
at fftaspire.org

Beckstone Primary School

LA Cumbria DFE 9093662 Produced November 2019

Reports

- Overview
- Attainment & Progress
- Pupil groups
- Subjects
- Disadvantaged pupils
- Scatterplot
- Context

What it tells you

- What are the strengths and weaknesses of your school?
- How does attainment and pupil progress at your school compare to the national average?
- How are you performing in different subjects?
- Do you have any under-performing groups of pupils?
- How might the context of your school affect performance?
- How does pupil attendance compare to the national average?

About the data shown



Filters

No filters chosen (all pupils included)
You can use filters to view a subset of pupils



Indicators

% Expected standard+ (Re, Wr, Ma)
Average Scaled Score (Re, Ma)



Value added

Achievement is compared with similar pupils nationally. The FFT VA model uses prior attainment, gender and month of birth as a starting point.

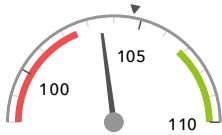
Overview

KS2 Attainment 2019 · Actual results

45 pupils

Average Scaled Score (Re, Ma)

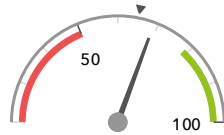
103.5



In line with the national average (104.7) ◀

% Expected standard+ (Re, Wr, Ma)

69%



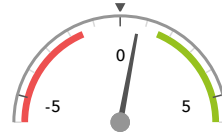
In line with the national average (65%) ◀

KS2 Progress 2019 · Value Added

45 matched pupils

Average Scaled Score (Re, Ma)

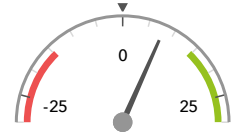
+0.7



In line with the national average (0) ◀

% Expected standard+ (Re, Wr, Ma)

+8%



In line with the national average (0%) ◀

KS2 higher and lower performing pupil groups 2019

	Higher performing	Lower performing
Overall achievement pupil progress	Autumn Term (14) Not FSM (ever) (31) Not FSM (in last 6 years) (32)	FSM (9) ↓ FSM (in last 6 years) (13) SEN Support (8)
KS2 reading achievement pupil progress	Autumn Term (14) ↑ Middle attainers (27) ⊕ ↑ Not FSM (36) ⊕ ↑	FSM (9) FSM (in last 6 years) (13)
KS2 writing achievement pupil progress	Lower attainers (5) ⊕ Male (25) ⊕ Spring Term (13)	
KS2 mathematics achievement pupil progress	Autumn Term (14) Male (25) Not FSM (ever) (31)	FSM (9) ⊖ ↓ FSM (in last 6 years) (13) ⊖ ↓ FSM (ever) (14) ⊖ ↓
KS2 grammar, punctuation & spelling achievement pupil progress	No SEN (37) ⊕ ↑ Higher attainers (13) Spring Term (13)	SEN Support (8) Lower attainers (5) FSM (9)

Attainment & progress

KS2 Attainment 2019

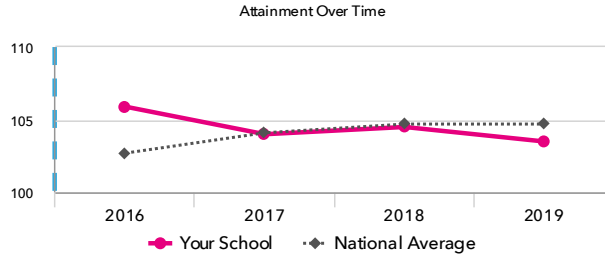
45 pupils

Average Scaled Score (Re, Ma)

103.5



In line with the national average (104.7)

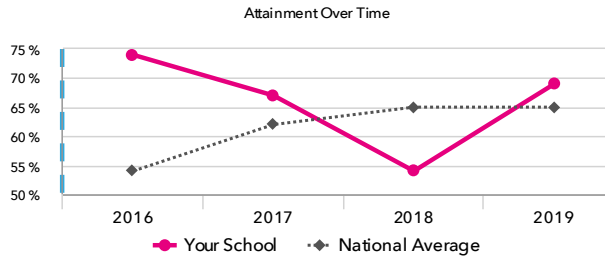


% Expected standard+ (Re, Wr, Ma)

69%



In line with the national average (65%)



KS2 Progress 2019

45 matched pupils

Average Scaled Score (Re, Ma)

+0.7



In line with the national average (0)

% Expected standard+ (Re, Wr, Ma)

+8%



In line with the national average (0%)

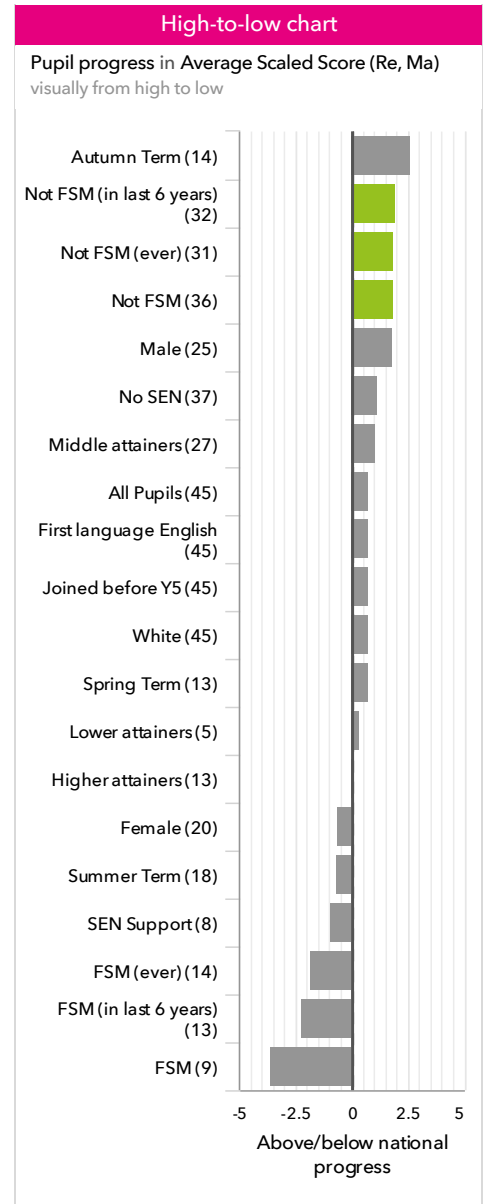
KS2 performance summary

	Actual results			Pupil progress		
	2017	2018	2019	2017	2018	2019
Number of Pupils / % Matched	43	37	45	100%	100%	100%
% Expected standard+ (Re, Wr, Ma)	67%	54%	69%	+10% ↓	-10%	+8%
% Higher standard (Re, Wr, Ma)	7%	11%	9%	+3%	+2%	+4%
Average Scaled Score (Re, GPS, Ma)	104.2	105.4	103.7	+1.3 ↓	-0.0	+0.5
Average Scaled Score (Re, Ma)	104.0	104.5	103.5	+1.5 ↓	-0.6 ↓	+0.7
% Expected standard+ Reading	77%	57% ⚡	80% ↑	+8%	-19% ⚡↓	+10% ↑
% Higher standard Reading	19% ↓	19%	33%	-0% ↓	-7%	+12% ↑
Scaled Score Reading	104.4 ↓	103.0	104.6	+1.9 ↓	-2.5 ⚡↓	+2.3 ⚡↑
% Expected standard+ Writing	81%	81%	82%	+7%	+3%	+6%
% Higher standard Writing	28%	27%	24%	+15% ⚡	+9%	+10%
Scaled Score Writing	103.3	103.1	103.3	+2.8 ⚡	+1.1	+2.7 ⚡
% Expected standard+ Maths	72%	86%	69%	+2%	+11%	-8%
% Higher standard Maths	21%	30%	22%	+4%	+7%	+1%
Scaled Score Maths	103.7	106.1	102.3 ⚡↓	+1.1	+1.2	-0.8
% Expected standard+ Grammar, Punctuation & Spelling	77%	84%	78%	+2%	+7%	+2%
% Higher standard Grammar, Punctuation & Spelling	23%	32%	38%	-4% ↓	-1%	+6%
Scaled Score Grammar, Punctuation & Spelling	105.1	106.5	105.6	+0.8 ↓	-0.2	+1.2
% Expected standard+ Science	84%	92%	87%	-	-	-

Pupil groups

KS2 Pupil groups performance 2019

	Pupils	Actual results		Pupil progress		
		Average Scaled Score (Re, Ma)	% Expected standard+ (Re, Wr, Ma)	Average Scaled Score (Re, Ma)	% Expected standard+ (Re, Wr, Ma)	
Summary	All Pupils	45	103.5	69%	+0.7	+8%
Gender	Male	25	103.8	68%	+1.8	+10%
	Female	20	103.0	70%	-0.6	+5%
DFE Prior Attainment	Higher attainers	13	109.6	100%	+0.2	+8%
	Middle attainers	27	104.0	67% ↑	+1.1	+10% ↑
	Lower attainers	5	84.6 ⚡	0%	+0.3	-5%
Pupil Premium	FSM (in last 6 years)	13	98.6	46%	-2.2	-5%
	Not FSM (in last 6 years)	32	105.4	78%	+1.9 ⬆️⬆️	+13%
FSM	FSM	9	96.2 ⬇️	33%	-3.6 ⬇️	-12%
	Not FSM	36	105.3	78% ↑	+1.8 ⬆️⬆️	+13% ↑
FSM Ever	FSM (ever)	14	98.6	43%	-1.8	-6%
	Not FSM (ever)	31	105.6	81%	+1.9 ⬆️⬆️	+14%
Term of Birth	Autumn Term	14	104.9	71%	+2.6 ↑	+7%
	Spring Term	13	104.7	85%	+0.7	+19%
	Summer Term	18	101.4	56%	-0.7	-0%
SEN Group	SEN Support	8	91.6	13%	-0.9	-16%
	No SEN	37	106.0	81%	+1.1	+13%
EAL	First language English	45	103.5	69%	+0.7	+8%
Mobility	Joined before Y5	45	103.5	69%	+0.7	+8%
Ethnicity	White	45	103.5	69%	+0.7	+8%



Subjects

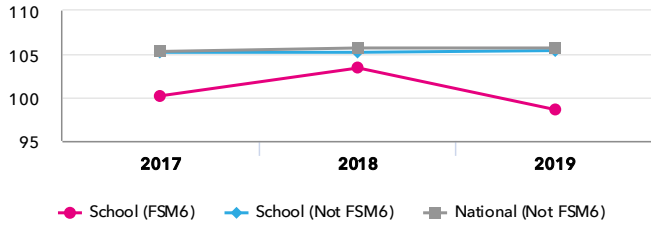
KS2 subject performance 2019

	Actual results			Pupil progress			Actual results over time		
	2017	2018	2019	2017	2018	2019			
Number of Pupils / % Matched	43	37	45	100%	100%	100%			
Reading									
% Expected standard+	77%	57% -	80% ↑	+8%	-19% -	+10% ↑			
% Higher standard	19% ↓	19%	33%	-0% ↓	-7%	+12% ↑			
Scaled Score	104 ↓	103	105	+1.9 ↓	-2.5 -	+2.3 ↑			
Writing									
% Expected standard+	81%	81%	82%	+7%	+3%	+6%			
% Higher standard	28%	27%	24%	+15% +	+9%	+10%			
Scaled Score	103	103	103	+2.8 +	+1.1	+2.7 +			
Maths									
% Expected standard+	72%	86%	69%	+2%	+11%	-8%			
% Higher standard	21%	30%	22%	+4%	+7%	+1%			
Scaled Score	104	106	102 -	+1.1	+1.2	-0.8			
Grammar, Punctuation & Spelling									
% Expected standard+	77%	84%	78%	+2%	+7%	+2%			
% Higher standard	23%	32%	38%	-4% ↓	-1%	+6%			
Scaled Score	105	107	106	+0.8 ↓	-0.2	+1.2			
Science									
% Expected standard+	84%	92%	87%	-	-	-			

Disadvantaged pupils

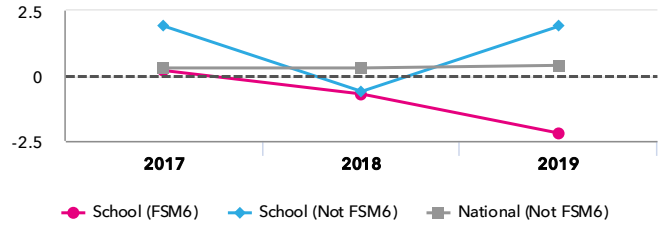
KS2 attainment for disadvantaged pupils 2019

Average Scaled Score (Re, Ma)



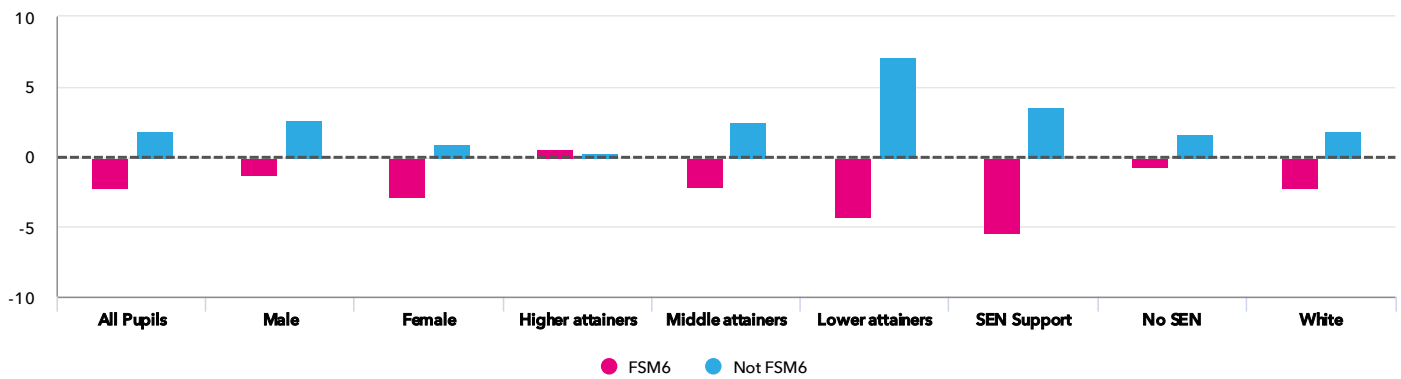
KS2 progress for disadvantaged pupils 2019

Average Scaled Score (Re, Ma)



Progress gap

Average Scaled Score (Re, Ma)

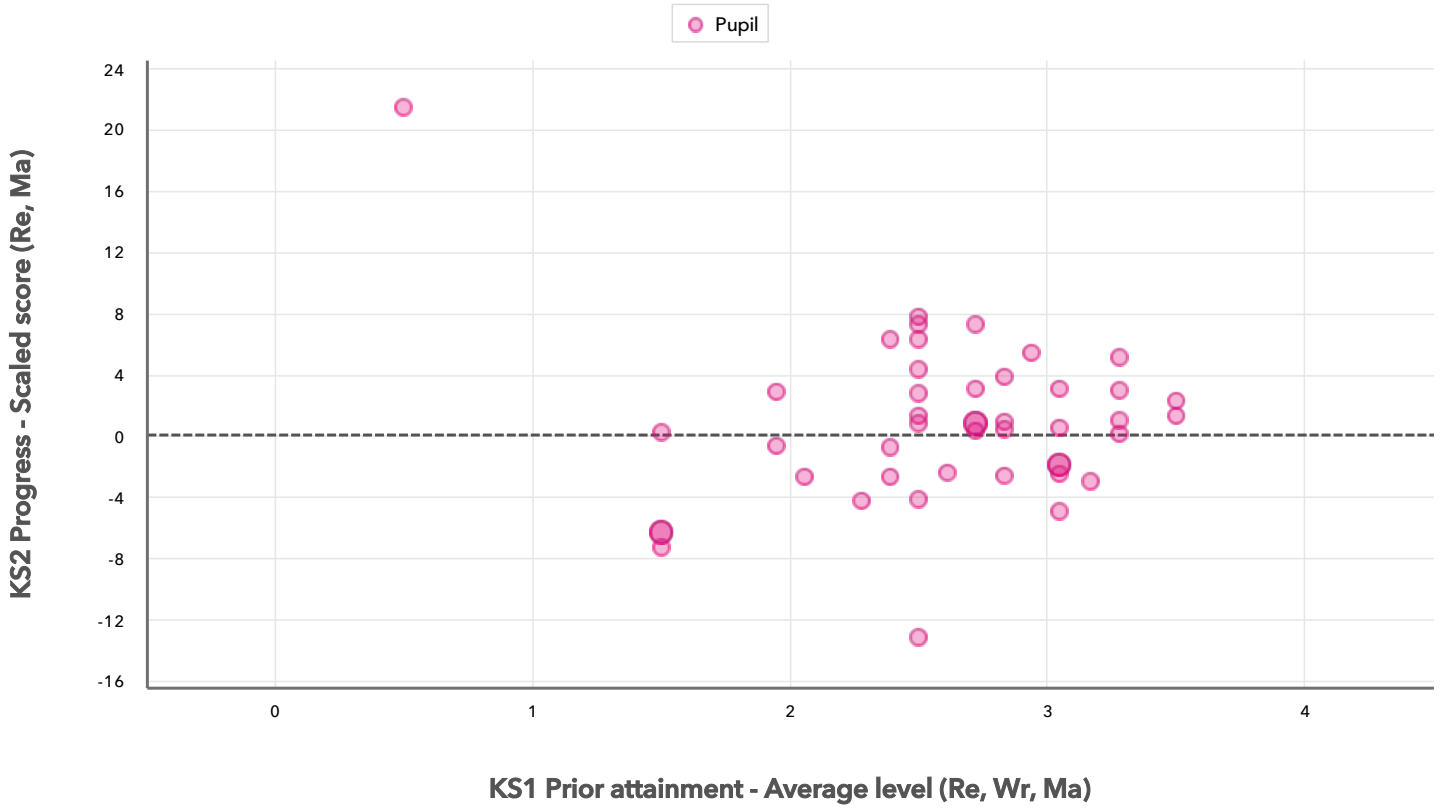


Attainment & progress

Pupils	Attainment			Progress					
	Average Scaled Score (Re, Ma)			Average Scaled Score (Re, Ma)					
	FSM6	Not FSM6	Gap	FSM6	Not FSM6	Gap			
Summary	All Pupils	13	32	98.6	105.4	-6.8	-2.2	1.9 ⬆️ ⬆️ ⬆️	-4.1
Gender	Male	5	20	97.6	105.4	-7.8	-1.2	2.6	-3.8
	Female	8	12	99.2	105.5	-6.3	-2.8	0.9	-3.7
DFE Prior Attainment	Higher attainers	2	11	109	109.7	-0.7	0.6	0.1	0.5
	Middle attainers	8	19	100.8	105.3	-4.5	-2.1	2.5	-4.6
	Lower attainers	3	2	85.7	83	2.7	-4.2	7.1	-11.3
SEN Group	SEN Support	4	4	91.1	92.1	-1	-5.4	3.6	-9
	No SEN	9	28	101.9	107.3	-5.4	-0.7	1.7	-2.4
Ethnic Group	White	13	32	98.6	105.4	-6.8	-2.2	1.9	-4.1

Scatterplot

KS2 Pupil scatterplot 2019 45 pupils highlighted by All pupils



Context

Context · Year 6

		Pupils	Comparative profile 2018 / 2019		Absence during Key Stage 2		Persistent absence during Key Stage 2	
		School	School	National	School	National	School	National
Summary	All Pupils	45	100%	100%	-	-	-	-
Gender	Male	25	56%	51%	-	-	-	-
	Female	20	44%	49%	-	-	-	-
DFE Prior Attainment	Higher attainers	13	29%	32%	-	-	-	-
	Middle attainers	27	60%	54%	-	-	-	-
	Lower attainers	5	11%	8%	-	-	-	-
Pupil Premium	FSM (in last 6 years)	13	29%	29%	-	-	-	-
	Not FSM (in last 6 years)	32	71%	71%	-	-	-	-
FSM	FSM	9	20%	17%	-	-	-	-
	Not FSM	36	80%	83%	-	-	-	-
FSM Ever	FSM (ever)	14	31%	31%	-	-	-	-
	Not FSM (ever)	31	69%	69%	-	-	-	-
Term of Birth	Autumn Term	14	31%	33%	-	-	-	-
	Spring Term	13	29%	33%	-	-	-	-
	Summer Term	18	40%	34%	-	-	-	-
SEN Group	SEN Support	8	18%	15%	-	-	-	-
	No SEN	37	82%	82%	-	-	-	-
EAL	First language English	45	100%	79%	-	-	-	-
Mobility	Joined before Y5	45	100%	93%	-	-	-	-
Ethnicity	White	45	100%	74%	-	-	-	-