

2018 KS2 School Dashboard for governors & school leaders

Produce custom dashboards at
www.fftaspire.org

Beckstone Primary School

LA Cumbria DFE 9093662 Produced September 2018 Version 1

What it is

Seven easy-to-use reports which help governors and school leaders to evaluate school performance using the latest 2017 DFE school performance indicators.

What it tells you

- What are the strengths and areas for improvement in your school?
- How does attainment and pupil progress compare to the national average?
- How are you performing in different subjects?
- Do you have any under-performing groups of pupils?
- How might the context of your school affect performance?
- How does pupil attendance compare to the national average?

About the data shown

1 2 3

Actual results

Actual results for your school, using a range of measures such as averages and thresholds.



Gauges

These display headline indicators and whether actual results and pupils' progress are in line with, or significantly above or below, the national average.

ESTIMATED ↔ 1 2 3

Pupil progress

The value added progress that your pupils have made from one key stage to the next. FFT compares your actual results to the estimated results based on the progress of similar pupils nationally.



Statistical significance

Green plus signs and red minus signs highlight where either actual results or pupils' progress is significantly above or below the national average.



Trends

The dashboard analyses school performance over 3-5 years. Any significant year-on-year improvement is highlighted using an up arrow. Significant declines in performance are highlighted with a down arrow.



Strengths & weaknesses

These highlight key pupil groups and subjects where progress is above or below the national average.

Working in partnership with



Data sources

Generated from FFT Aspire which includes data sourced from the DfE (National Pupil Database) and data calculated by FFT. FFT is accredited as a DfE supplier to receive early access to ASP data. Headline performance indicators will be consistent with the DfE School Performance Tables and ASP.

Overview

KS2 Attainment 2018 · Actual results

37 pupils

KS2 Progress 2018 · Value Added

37 matched pupils

Average Scaled Score (Re, Ma)

% Expected standard+ (Re, Wr, Ma)

Average Scaled Score (Re, Ma)

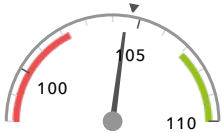
% Expected standard+ (Re, Wr, Ma)

104.5

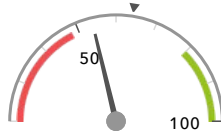
54%

-0.6 ↓

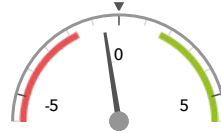
-9%



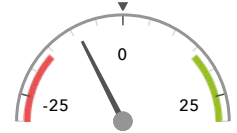
In line with the national average (104.7) ◀



In line with the national average (64%) ◀



In line with the national average (0) ◀



In line with the national average (0%) ◀

KS2 higher and lower performing pupil groups 2018

	Higher performing	Lower performing
Overall achievement pupil progress	SEN Support (9) Male (18) FSM (9)	Autumn Term (9) ↓ Female (19) ↓ Middle attainers (12) ↓
KS2 reading achievement pupil progress	FSM (9)	Middle attainers (12) ↓ Not FSM (28) ↓ Female (19) ↓
KS2 writing achievement pupil progress	Middle attainers (12) Not FSM (in last 6 years) (23) Summer Term (17)	Lower attainers (13) ↓
KS2 mathematics achievement pupil progress	Male (18) ↑ Summer Term (17) Spring Term (11)	Autumn Term (9) Female (19)
KS2 grammar, punctuation & spelling achievement pupil progress	SEN Support (9) FSM (9) Higher attainers (12)	Autumn Term (9) Not FSM (28) Middle attainers (12)

Attainment & progress

KS2 Attainment 2018

37 pupils

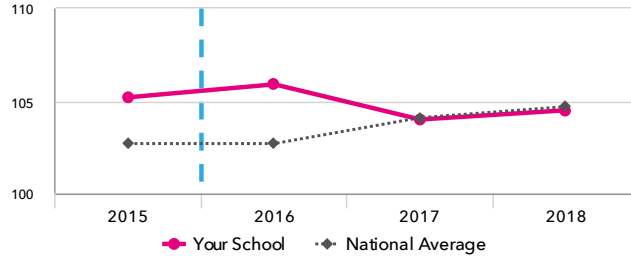
Average Scaled Score (Re, Ma)

104.5

FFT Rank



In line with the national average (104.7)



KS2 Progress 2018

37 matched pupils

Average Scaled Score (Re, Ma)

-0.6 ↓

FFT Rank



In line with the national average (0)

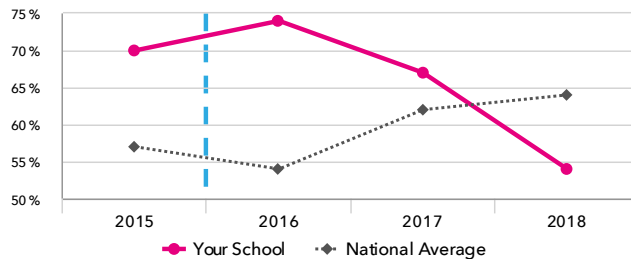
% Expected standard+ (Re, Wr, Ma)

54%

FFT Rank



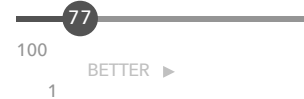
In line with the national average (64%)



% Expected standard+ (Re, Wr, Ma)

-9%

FFT Rank



In line with the national average (0%)

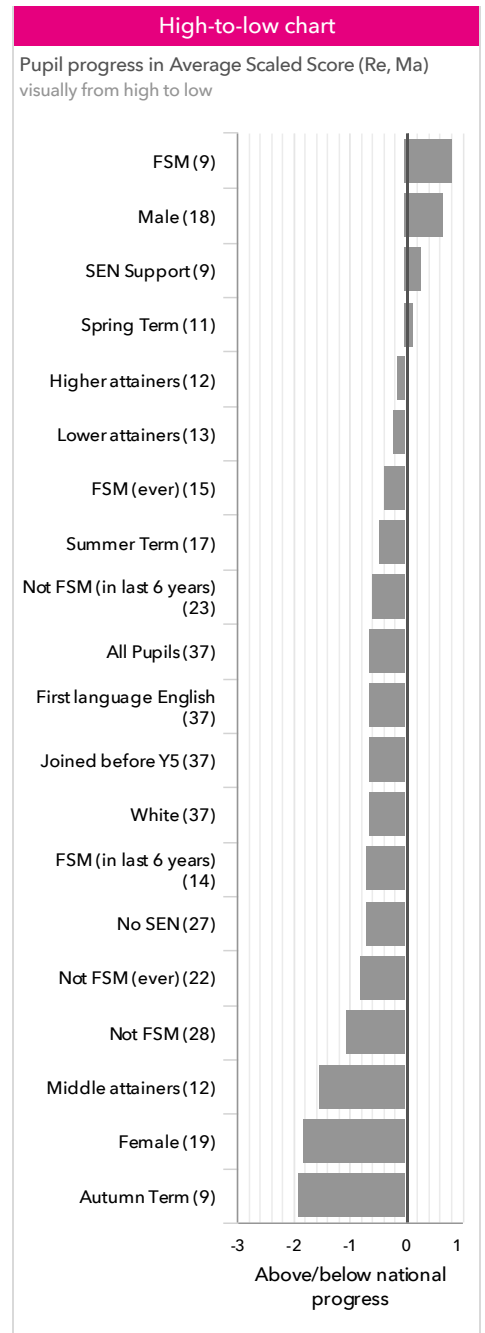
KS2 performance summary

	Actual results			Pupil progress		
	2016	2017	2018	2016	2017	2018
Number of Pupils / % Matched	47	43	37	100%	100%	100%
% Expected standard+ (Re, Wr, Ma)	74% +	67%	54%	+29% +	+10% ↓	-9%
% Higher standard (Re, Wr, Ma)	9%	7%	11%	+8% +	+3%	+2%
Average Scaled Score (Re, GPS, Ma)	105.2 +	104.2	105.4	+3.7 +	+1.3 ↓	-0.0
Average Scaled Score (Re, Ma)	105.9 +	104.0	104.5	+4.6 +	+1.5 ↓	-0.6 ↓
% Expected standard+ Reading	87% +	77%	57% -	+25% +	+8%	-18% - ↓
% Higher standard Reading	49% + ↑	19% ↓	19%	+40% + ↑	-0% ↓	-7%
Scaled Score Reading	107.9 +	104.4 ↓	103.0	+7.0 + ↑	+1.9 ↓	-2.5 - ↓
% Expected standard+ Writing	85%	81%	81%	+11%	+7%	+3%
% Higher standard Writing	19%	28%	27%	+13% +	+15% +	+9%
Scaled Score Writing	103.1	103.3	103.1	+3.0 +	+2.8 +	+1.1
% Expected standard+ Maths	74%	72%	86%	+7%	+2%	+11%
% Higher standard Maths	26%	21%	30%	+18% +	+4%	+7%
Scaled Score Maths	103.9	103.7	106.1	+2.2 +	+1.1	+1.2
% Expected standard+ Grammar, Punctuation & Spelling	85%	77%	84%	+14% +	+2%	+7%
% Higher standard Grammar, Punctuation & Spelling	28%	23%	32%	+16% +	-4% ↓	-1%
Scaled Score Grammar, Punctuation & Spelling	105.4	105.1	106.5	+3.0 +	+0.8 ↓	-0.2
% Expected standard+ Science	98% +	84%	92%	-	-	-
Average Point Score (Re, Wr, Ma)	-	-	-	-	-	-
% Level 4+ (Re, Wr, Ma)	-	-	-	-	-	-
% Level 4B+ (Re, Wr, Ma)	-	-	-	-	-	-
% Level 5+ (Re, Wr, Ma)	-	-	-	-	-	-

Pupil groups

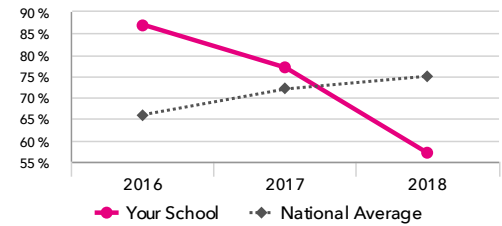
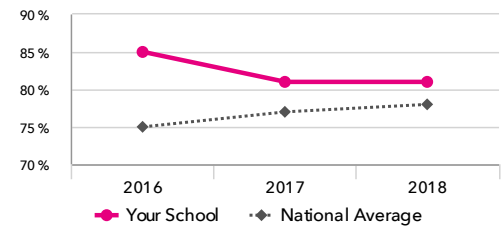
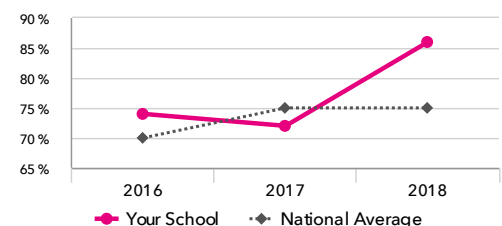
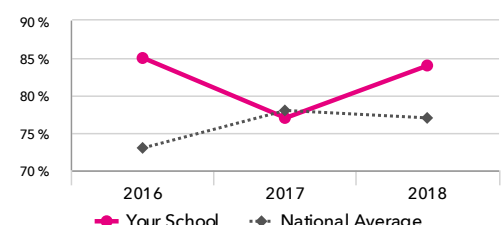
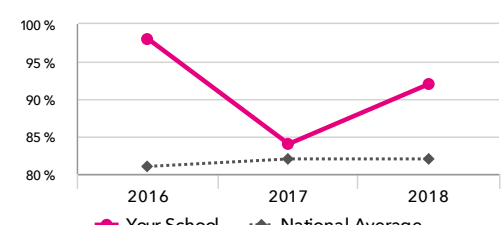
KS2 Pupil groups performance 2018

		Pupils	Actual results			Pupil progress		
			Average Scaled Score (Re, Ma)	% Expected standard + (Re, Wr, Ma)	% Higher standard (Re, Wr, Ma)	Average Scaled Score (Re, Ma)	% Expected standard + (Re, Wr, Ma)	% Higher standard (Re, Wr, Ma)
Summary	All Pupils >	37	104.5	54%	11%	-0.6 ↓	-9%	+2%
Gender	Male >	18	105.5	44%	11%	+0.7	-13%	+5%
	Female >	19	103.8	63%	11%	-1.8 ↓	-6%	-0%
Prior Attainment	Higher attainers >	12	110.1	100%	33%	-0.1	+6%	+11%
	Middle attainers >	12	103.5 ↓	50%	0%	-1.5 ↓	-23%	-3%
	Lower attainers >	13	99.7	15%	0%	-0.2	-11%	-0%
Pupil Premium	FSM (in last 6 years) >	14	103.4	43%	7%	-0.7	-14%	-1%
	Not FSM (in last 6 years) >	23	105.2	61%	13%	-0.6 ↓	-7%	+5%
FSM	FSM >	9	105.4	56%	11%	+0.8	-2%	+4%
	Not FSM >	28	104.3	54%	11%	-1.1 ↓	-12%	+2%
FSM Ever	FSM (ever) >	15	104.1	47%	13%	-0.4	-12%	+5%
	Not FSM (ever) >	22	104.9	59%	9%	-0.8 ↓	-7%	+1%
Term of Birth	Autumn Term >	9	106.5	78%	22%	-1.9 ↓	+3%	+12%
	Spring Term >	11	104.3	55%	0%	+0.1	-5%	-7%
	Summer Term >	17	103.8	41%	12%	-0.5	-19%	+4%
SEN Group	SEN Support >	9	99.6	11%	0%	+0.3	-16%	-0%
	EHC Plan >	1	-	0%	0%	-	-2%	-0%
	No SEN >	27	106.0	70%	15%	-0.7 ↓	-8%	+3%
EAL	First language English >	37	104.5	54%	11%	-0.6 ↓	-9%	+2%
Mobility	Joined before Y5 >	37	104.5	54%	11%	-0.6 ↓	-9%	+2%
Ethnicity	White >	37	104.5	54%	11%	-0.6 ↓	-9%	+2%



Subjects

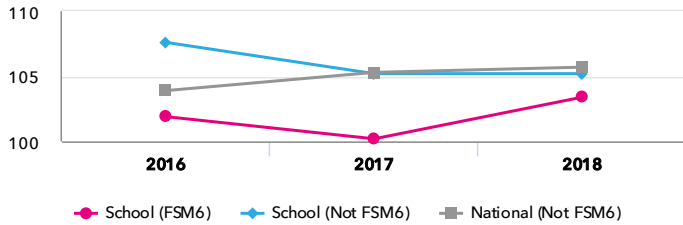
KS2 subject performance 2018

	Actual results			Pupil progress			Actual results over time		
	2016	2017	2018	2016	2017	2018			
Number of Pupils / % Matched	47	43	37	100%	100%	100%			
Reading									
% Expected standard+	87% +	77%	57% -	+25% +	+8%	-18% - ↓	% Expected standard+ Reading		
% Higher standard	49% + ↑	19% ↓	19%	+40% + ↑	-0%	-7%			
Scaled Score	108 +	104 ↓	103	+7.0 + ↑	+1.9 ↓	-2.5 - ↓			
Level 4+	-	-	-	-	-	-			
Level 4B+	-	-	-	-	-	-			
Level 5+	-	-	-	-	-	-			
Average Point Score	-	-	-	-	-	-			
Writing									
% Expected standard+	85%	81%	81%	+11%	+7%	+3%	% Expected standard+ Writing		
% Higher standard	19%	28%	27%	+13% +	+15% +	+9%			
Scaled Score	103	103	103	+3.0 +	+2.8 +	+1.1			
Level 4+	-	-	-	-	-	-			
Level 5+	-	-	-	-	-	-			
Average Point Score	-	-	-	-	-	-			
Maths									
% Expected standard+	74%	72%	86%	+7%	+2%	+11%	% Expected standard+ Maths		
% Higher standard	26%	21%	30%	+18% +	+4%	+7%			
Scaled Score	104	104	106	+2.2 +	+1.1	+1.2			
Level 4+	-	-	-	-	-	-			
Level 4B+	-	-	-	-	-	-			
Level 5+	-	-	-	-	-	-			
Average Point Score	-	-	-	-	-	-			
Grammar, Punctuation & Spelling									
% Expected standard+	85%	77%	84%	+14% +	+2%	+7%	% Expected standard+ Grammar, Punctuation & Spelling		
% Higher standard	28%	23%	32%	+16% +	-4% ↓	-1%			
Scaled Score	105	105	107	+3.0 +	+0.8 ↓	-0.2			
Science									
% Expected standard+	98% +	84%	92%	-	-	-	% Expected standard+ Science		
Level 4+	-	-	-	-	-	-			
Level 5+	-	-	-	-	-	-			
Average Point Score	-	-	-	-	-	-			

Disadvantaged pupils

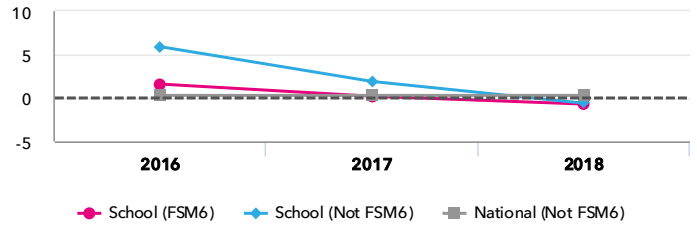
KS2 attainment for disadvantaged pupils 2018

Average Scaled Score (Re, Ma)



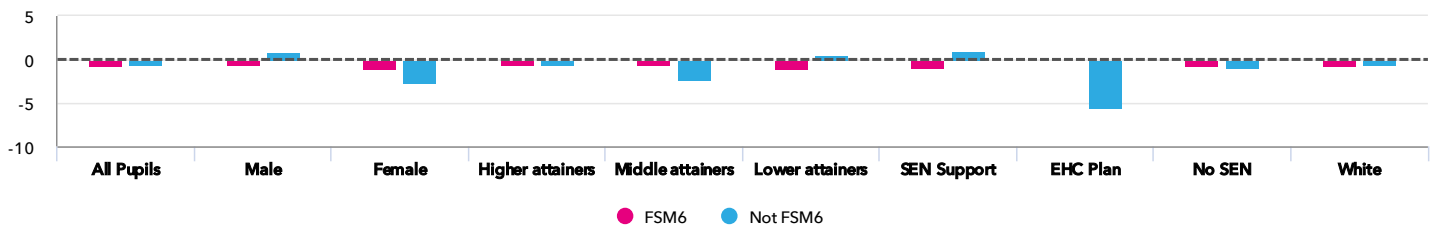
KS2 progress for disadvantaged pupils 2018

Average Scaled Score (Re, Ma)



Progress gap

Average Scaled Score (Re, Ma)

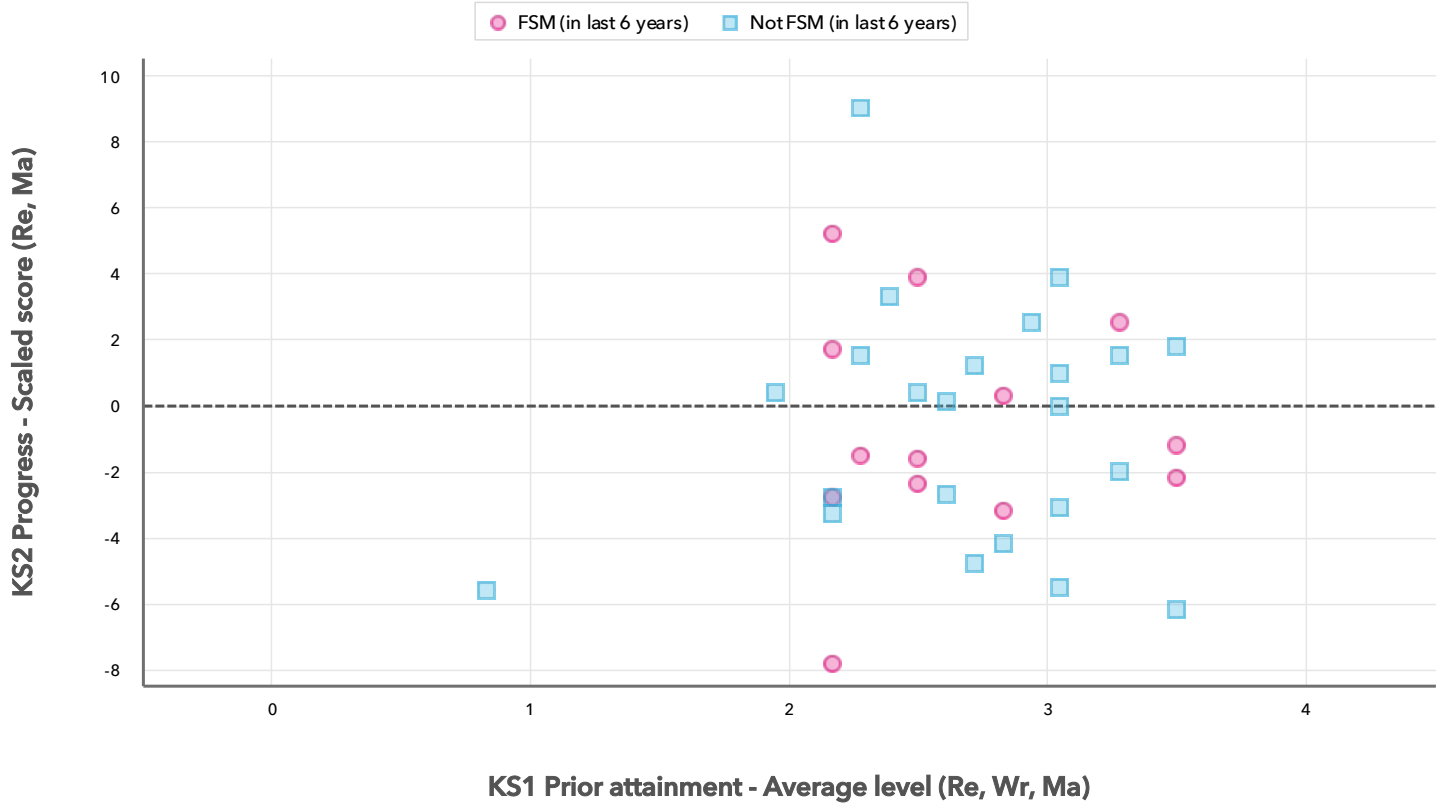


Attainment & progress

Pupils				Attainment			Progress		
				Average Scaled Score (Re, Ma)			Average Scaled Score (Re, Ma)		
		FSM6	Not FSM6	FSM6	Not FSM6	Gap	FSM6	Not FSM6	Gap
Summary	All Pupils	14	23	103.4	105.2	-1.8	-0.7	-0.6 ↓	-0.1
Gender	Male	5	13	103.9	106	-2.1	+0.0	0.9	-0.9
	Female	9	10	103.2	104.3	-1.1	-1	-2.5	1.5
Prior Attainment	Higher attainers	3	9	111.3	109.7	1.6	-0.3	-0.1	-0.2
	Middle attainers	5	7	103.9	103.1	0.8	-0.6	-2.2	1.6
	Lower attainers	6	7	98.1	101	-2.9	-1.1	0.4	-1.5
SEN Group	SEN Support	4	5	98.5	100.2	-1.7	-0.9	1	-1.9
	EHC Plan	-	1	-	-	-	-	-5.6	-
	No SEN	10	17	104.9	106.7	-1.8	-0.7	-0.8	0.1
Ethnic Group	White	14	23	103.4	105.2	-1.8	-0.7	-0.6	-0.1

Scatterplot

KS2 Pupil scatterplot 2018 37 pupils highlighted by Pupil Premium



Context

Context · Year 6 · 2017 / 2018

		Pupils	Proportion	
			School	National
Summary	All Pupils	37	100%	100%
Gender	Male	18	49%	51%
	Female	19	51%	49%
Prior Attainment	Higher attainers	12	32%	31%
	Middle attainers	12	32%	35%
	Lower attainers	13	35%	29%
Pupil Premium	FSM (in last 6 years)	14	38%	30%
	Not FSM (in last 6 years)	23	62%	69%
FSM	FSM	9	24%	15%
	Not FSM	28	76%	85%
FSM Ever	FSM (ever)	15	41%	31%
	Not FSM (ever)	22	59%	69%
Term of Birth	Autumn Term	9	24%	33%
	Spring Term	11	30%	32%
	Summer Term	17	46%	35%
SEN Group	SEN Support	9	24%	15%
	EHC Plan	1	3%	3%
	No SEN	27	73%	82%
EAL	First language English	37	100%	80%
Mobility	Joined before Y5	37	100%	93%
Ethnicity	White	37	100%	74%

Absence · Year 6 · 2017 / 2018

		Pupils	Absence		Persistent absentees	
			School	National	School	National
Summary	All Pupils	37	4%	4%	8%	5%
Gender	Male	18	5%	4%	17%	6%
	Female	19	4%	4%	0%	5%
Prior Attainment	Higher attainers	12	4%	3%	0%	2%
	Middle attainers	12	4%	4%	8%	4%
	Lower attainers	13	4%	5%	15%	10%
Pupil Premium	FSM (in last 6 years)	14	4%	5%	7%	12%
	Not FSM (in last 6 years)	23	4%	3%	9%	3%
FSM	FSM	9	5%	6%	11%	16%
	Not FSM	28	4%	4%	7%	4%
FSM Ever	FSM (ever)	15	4%	5%	7%	11%
	Not FSM (ever)	22	4%	3%	9%	3%
Term of Birth	Autumn Term	9	4%	4%	0%	6%
	Spring Term	11	5%	4%	18%	6%
	Summer Term	17	4%	4%	6%	5%
SEN Group	SEN Support	9	4%	5%	11%	10%
	EHC Plan	1	4%	7%	0%	20%
	No SEN	27	4%	4%	7%	4%
EAL	First language English	37	4%	4%	8%	6%
Mobility	Joined before Y5	37	4%	4%	8%	5%
Ethnicity	White	37	4%	4%	8%	6%