

Self-evaluation Summary Dashboard

Produce custom dashboards at fftaspire.org

Beckstone Primary School

LA Cumbria DFE 9093662 Produced November 2019

Reports

- Overview
- Attainment & Progress
- Pupil groups
- Subjects
- Disadvantaged pupils
- Scatterplot
- Context

What it tells you

- What are the strengths and weaknesses of your school?
- How does attainment and pupil progress at your school compare to the national average?
- How are you performing in different subjects?
- Do you have any under-performing groups of pupils?
- How might the context of your school affect performance?
- How does pupil attendance compare to the national average?

About the data shown



Filters

No filters chosen (all pupils included)
You can use filters to view a subset of pupils



Indicators

% Expected Standard + (Re, Wr, Ma)
% Higher Standard (Re, Wr, Ma)



Value added

Achievement is compared with similar pupils nationally. The FFT VA model uses prior attainment, gender and month of birth as a starting point.

Overview

KS1 Attainment 2019 · Actual results

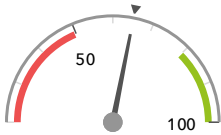
40 pupils

% Expected Standard + (Re, Wr, Ma)

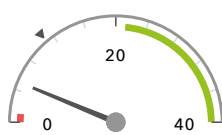
% Higher Standard (Re, Wr, Ma)

65%

5%



In line with the national average (65%) ◀



In line with the national average (11%) ◀

KS1 Progress 2019 · Value Added

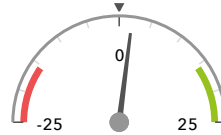
40 matched pupils

% Expected Standard + (Re, Wr, Ma)

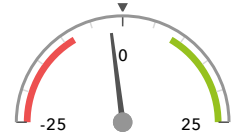
% Higher Standard (Re, Wr, Ma)

+2%

-2%



In line with the national average (0%) ◀



In line with the national average (0%) ◀

KS1 higher and lower performing pupil groups 2019

	Higher performing	Lower performing
Overall achievement pupil progress	Summer Term (11) Lower attainers (13) Female (17)	Higher attainers (12) FSM (7) FSM (in last 6 years) (7)
KS1 reading achievement pupil progress	Lower attainers (13) Not FSM (33) Not FSM (in last 6 years) (33)	FSM (7) FSM (in last 6 years) (7) Autumn Term (14)
KS1 writing achievement pupil progress	Summer Term (11) Lower attainers (13) SEN Support (9)	Higher attainers (12) Spring Term (15) Middle attainers (15)
KS1 mathematics achievement pupil progress	Autumn Term (14) Summer Term (11) Middle attainers (15)	Spring Term (15) SEN Support (9) Higher attainers (12)

Attainment & progress

KS1 Attainment 2019

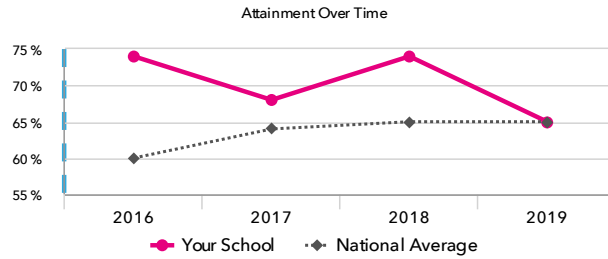
40 pupils

% Expected Standard + (Re, Wr, Ma)

65%



In line with the national average (65%)



KS1 Progress 2019

40 matched pupils

% Expected Standard + (Re, Wr, Ma)

+2%



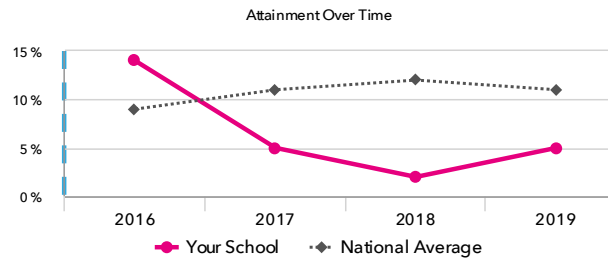
In line with the national average (0%)

% Higher Standard (Re, Wr, Ma)

-2%



In line with the national average (0%)



% Higher Standard (Re, Wr, Ma)

5%



In line with the national average (11%)

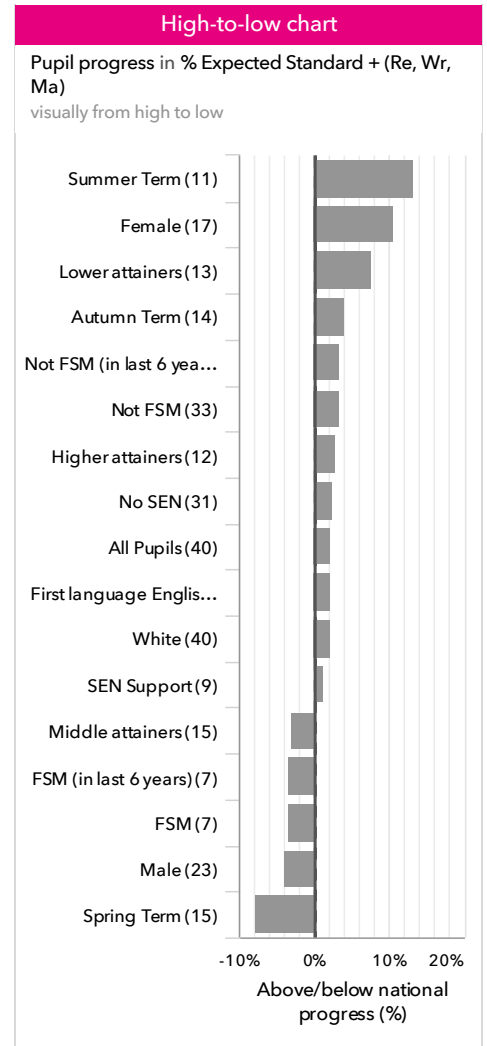
KS1 performance summary

	Actual results			Pupil progress		
	2017	2018	2019	2017	2018	2019
Number of Pupils / % Matched	44	54	40	100%	100%	100%
% Expected Standard + (Re, Wr, Ma)	68%	74%	65%	+13%	+12%	+2%
% Higher Standard (Re, Wr, Ma)	5%	2% -	5%	+2%	-3%	-2%
% Expected Standard + Reading	82%	85%	75%	+10%	+11%	+1%
% Higher Standard Reading	18%	20%	18%	+7%	+4%	-3%
% Expected Standard + Writing	82%	78%	73%	+20% +	+11%	+5%
% Higher Standard Writing	16%	13%	8%	+11% +	+5%	-3%
% Expected Standard + Maths	86%	85%	83%	+16% +	+10%	+7%
% Higher Standard Maths	14%	17%	15%	+4%	+4%	-2%

Pupil groups

KS1 Pupil groups performance 2019

	Pupils	Actual results		Pupil progress		
		% Expected Standard + (Re, Wr, Ma)	% Higher Standard (Re, Wr, Ma)	% Expected Standard + (Re, Wr, Ma)	% Higher Standard (Re, Wr, Ma)	
Summary	All Pupils	40	65%	5%	+2%	-2%
Gender	Male	23	57%	4%	-4%	-2%
	Female	17	76%	6%	+11%	-3%
Prior Attainment	Higher attainers	12	92%	17%	+3%	-2%
	Middle attainers	15	73%	0%	-3%	-5%
	Lower attainers	13	31%	0%	+8%	-0%
Pupil Premium	FSM (in last 6 years)	7	57%	0%	-3%	-4%
	Not FSM (in last 6 years)	33	67%	6%	+3%	-2%
FSM	FSM	7	57%	0%	-3%	-4%
	Not FSM	33	67%	6%	+3%	-2%
Term of Birth	Summer Term	11	55%	0%	+13%	-2%
	Spring Term	15	60%	0%	-8%	-5%
	Autumn Term	14	79%	14%	+4%	+0%
SEN Group	SEN Support	9	44%	0%	+1%	-2%
	No SEN	31	71%	6%	+2%	-3%
EAL	First language English	40	65%	5%	+2%	-2%
Ethnicity	White	40	65%	5%	+2%	-2%



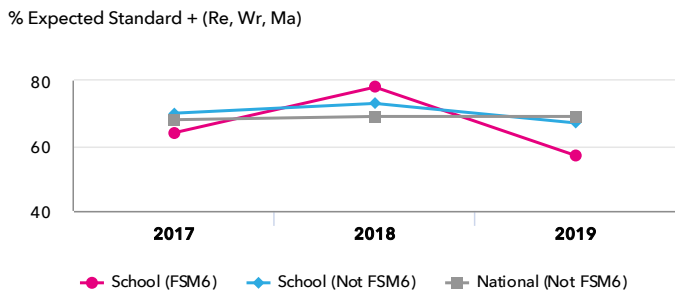
Subjects

KS1 subject performance 2019

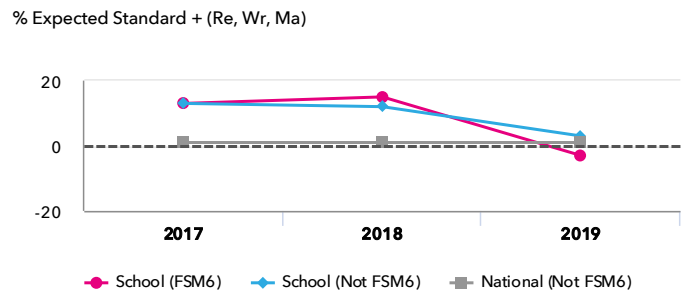
	Actual results			Pupil progress			Actual results over time		
	2017	2018	2019	2017	2018	2019			
Number of Pupils / % Matched	44	54	40	100%	100%	100%			
Reading									
% Expected Standard +	82%	85%	75%	+10%	+11%	+1%			
% Higher Standard	18%	20%	18%	+7%	+4%	-3%			
Writing									
% Expected Standard +	82%	78%	73%	+20% ⁺	+11%	+5%			
% Higher Standard	16%	13%	8%	+11% ⁺	+5%	-3%			
Maths									
% Expected Standard +	86%	85%	83%	+16% ⁺	+10%	+7%			
% Higher Standard	14%	17%	15%	+4%	+4%	-2%			
Science									
% Expected Standard +	89%	94% ⁺	83%	-	-	-			

Disadvantaged pupils

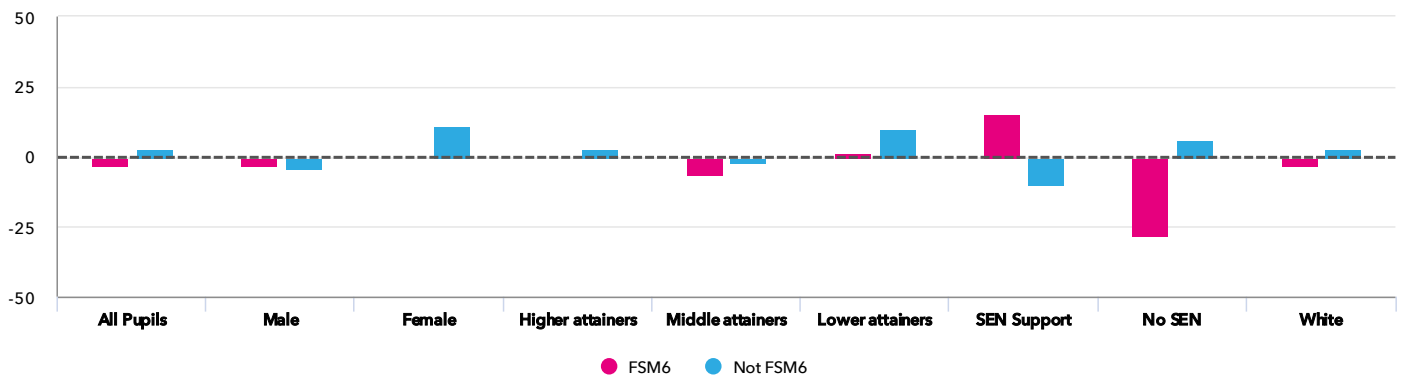
KS1 attainment for disadvantaged pupils 2019



KS1 progress for disadvantaged pupils 2019



Progress gap % Expected Standard + (Re, Wr, Ma)

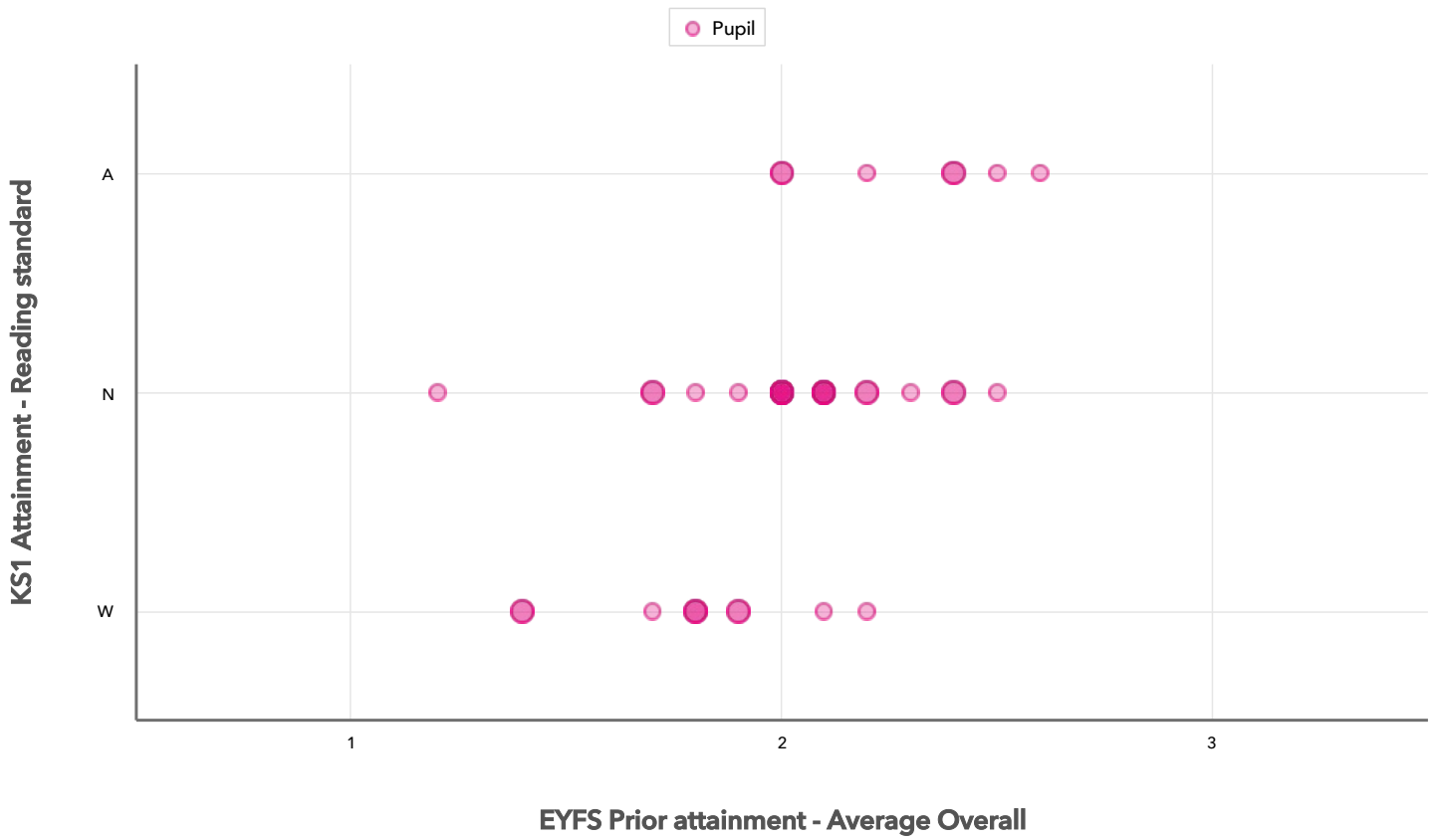


Attainment & progress

Pupils			Attainment			Progress			
	FSM6	Not FSM6	% Expected Standard + (Re, Wr, Ma)			% Expected Standard + (Re, Wr, Ma)			
			FSM6	Not FSM6	Gap	FSM6	Not FSM6	Gap	
Summary	All Pupils	7	33	57%	67%	-10%	-3%	3%	-6%
Gender	Male	7	16	57%	56%	1%	-3%	-4%	1%
	Female	-	17	-	76%	-	-	11%	-
Prior Attainment	Higher attainers	-	12	-	92%	-	-	3%	-
	Middle attainers	4	11	75%	73%	2%	-6%	-2%	-4%
	Lower attainers	3	10	33%	30%	3%	0%	10%	-10%
SEN Group	SEN Support	4	5	75%	20%	55%	15%	-10%	25%
	No SEN	3	28	33%	75%	-42%	-28%	6%	-34%
Ethnic Group	White	7	33	57%	67%	-10%	-3%	3%	-6%

Scatterplot

KS1 Pupil scatterplot 2019 40 pupils highlighted by All pupils



Context

Context - Year 2

		Pupils	Comparative profile 2018 / 2019		Absence during Key Stage 1		Persistent absence during Key Stage 1	
		School	School	National	School	National	School	National
Summary	All Pupils	40	100%	100%	-	-	-	-
Gender	Male	23	58%	51%	-	-	-	-
	Female	17	43%	49%	-	-	-	-
Prior Attainment	Higher attainers	12	30%	35%	-	-	-	-
	Middle attainers	15	38%	34%	-	-	-	-
	Lower attainers	13	33%	28%	-	-	-	-
Pupil Premium	FSM (in last 6 years)	7	18%	21%	-	-	-	-
	Not FSM (in last 6 years)	33	83%	79%	-	-	-	-
FSM	FSM	7	18%	16%	-	-	-	-
	Not FSM	33	83%	84%	-	-	-	-
Term of Birth	Summer Term	11	28%	34%	-	-	-	-
	Spring Term	15	38%	33%	-	-	-	-
	Autumn Term	14	35%	34%	-	-	-	-
SEN Group	SEN Support	9	23%	13%	-	-	-	-
	No SEN	31	78%	85%	-	-	-	-
EAL	First language English	40	100%	79%	-	-	-	-
Ethnicity	White	40	100%	74%	-	-	-	-