

# 2018 KS1 School Dashboard

for governors & school leaders

Produce custom dashboards  
at [fftaspire.org](http://fftaspire.org)

## Beckstone Primary School

LA Cumbria DFE 9093662 Produced November 2018 Version 1

### What it is

Seven easy-to-use reports that help governors and school leaders to evaluate school performance using the latest 2018 DFE school performance indicators.

### What it tells you

- What are the strengths and areas for improvement in your school?
- How does attainment and pupil progress compare to the national average over the last three years?
- How are you performing in different subjects?
- Do you have any under-performing groups of pupils?
- How might the context of your school affect performance?
- How does pupil attendance compare to the national average?

### About the data shown

1 2 3

#### Actual results

Actual results for your school, using a range of measures such as averages and thresholds.



#### Gauges

These display headline indicators and whether actual results and pupils' progress are in line with, or significantly above or below, the national average.

ESTIMATED



1 2 3

#### Pupil progress

The value added progress that your pupils have made from one key stage to the next. FFT compares your actual results to the estimated results based on the progress of similar pupils nationally.



#### Statistical significance

Green plus signs and red minus signs highlight where either actual results or pupils' progress is significantly above or below the national average.



#### Trends

The dashboard analyses school performance over 3-5 years. Any significant year-on-year improvement is highlighted using an up arrow. Significant declines in performance are highlighted with a down arrow.



#### Strengths & weaknesses

These highlight key pupil groups and subjects where progress is above or below the national average.

### Working in partnership with



### Data sources

Generated from FFT Aspire which includes data sourced from the DfE (National Pupil Database) and data calculated by FFT. FFT is accredited as a DfE supplier to receive early access to ASP data. Headline performance indicators will be consistent with the DfE School Performance Tables and ASP.

# Overview

## KS1 Attainment 2018 · Actual results

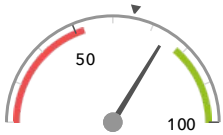
54 pupils

% Expected Standard + (Re, Wr, Ma)

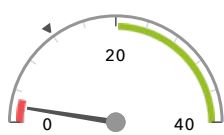
% Higher Standard (Re, Wr, Ma)

74%

2% -



In line with the national average (65%) ◀



Significantly below the national average (12%) ◀

## KS1 Progress 2018 · Value Added

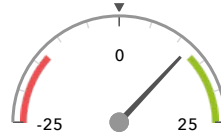
54 matched pupils

% Expected Standard + (Re, Wr, Ma)

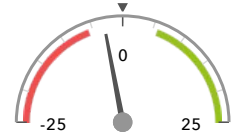
% Higher Standard (Re, Wr, Ma)

+12%

-3%



In line with the national average (0%) ◀



In line with the national average (0%) ◀

## KS1 higher and lower performing pupil groups 2018

	Higher performing	Lower performing
<b>Overall achievement</b> pupil progress	Lower attainers (19) <span style="color: green;">+</span> SEN Support (6) Spring Term (19) <span style="color: green;">+</span>	
<b>KS1 reading achievement</b> pupil progress	Middle attainers (13) Lower attainers (19) SEN Support (6)	FSM (5) FSM (in last 6 years) (9) Higher attainers (22)
<b>KS1 writing achievement</b> pupil progress	Lower attainers (19) Spring Term (19) SEN Support (6)	
<b>KS1 mathematics achievement</b> pupil progress	Autumn Term (16) FSM (5) Not FSM (in last 6 years) (45)	

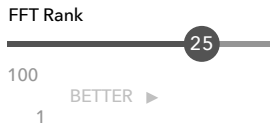
# Attainment & progress

## KS1 Attainment 2018

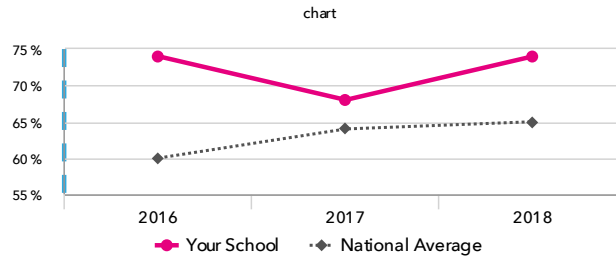
54 pupils

% Expected Standard + (Re, Wr, Ma)

**74%**



In line with the national average (65%)

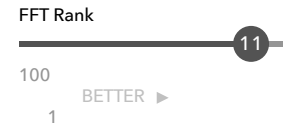


## KS1 Progress 2018

54 matched pupils

% Expected Standard + (Re, Wr, Ma)

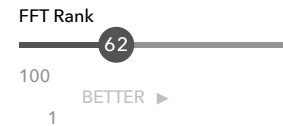
**+12%**



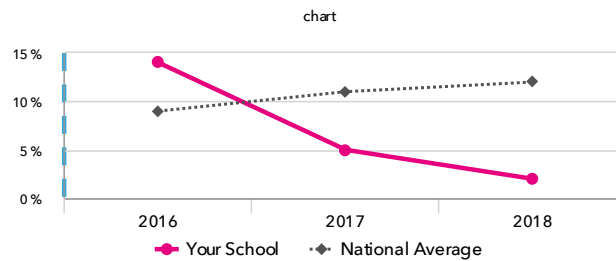
In line with the national average (0%)

% Higher Standard (Re, Wr, Ma)

**-3%**

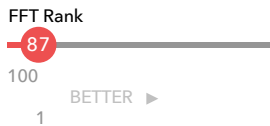


In line with the national average (0%)



% Higher Standard (Re, Wr, Ma)

**2%**



Significantly below the national average (12%)

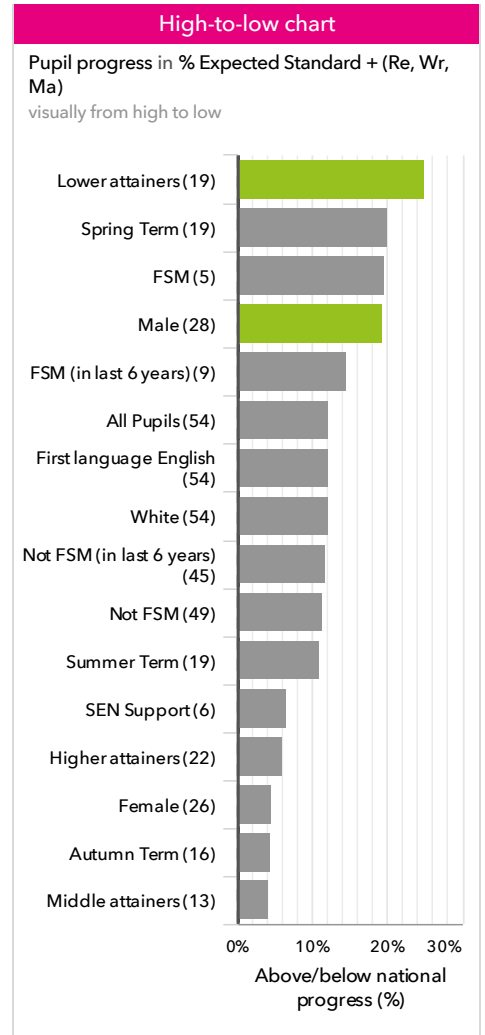
## KS1 performance summary

	Actual results			Pupil progress		
	2016	2017	2018	2016	2017	2018
Number of Pupils / % Matched	42	44	54	100%	100%	100%
% Expected Standard + (Re, Wr, Ma)	74%	68%	74%	+20% <span style="color: green;">+</span>	+13%	+12%
% Higher Standard (Re, Wr, Ma)	14%	5%	2% <span style="color: red;">-</span>	+8% <span style="color: green;">+</span>	+2%	-3%
% Expected Standard + Reading	74%	82%	85%	+6%	+10%	+11%
% Higher Standard Reading	17%	18%	20%	-3%	+7%	+4%
% Expected Standard + Writing	76%	82%	78%	+16% <span style="color: green;">+</span>	+20% <span style="color: green;">+</span>	+11%
% Higher Standard Writing	19%	16%	13%	+8%	+11% <span style="color: green;">+</span>	+5%
% Expected Standard + Maths	81%	86%	85%	+16% <span style="color: green;">+</span>	+16% <span style="color: green;">+</span>	+10%
% Higher Standard Maths	17%	14%	17%	+6%	+4%	+4%
% Level 2+ (Re, Wr, Ma)	-	-	-	-	-	-
% Level 2B+ (Re, Wr, Ma)	-	-	-	-	-	-
% Level 3+ (Re, Wr, Ma)	-	-	-	-	-	-
Average Point Score (Re, Wr, Ma)	-	-	-	-	-	-

# Pupil groups

## KS1 Pupil groups performance 2018

	Pupils	Actual results		Pupil progress		
		% Expected Standard + (Re, Wr, Ma)	% Higher Standard (Re, Wr, Ma)	% Expected Standard + (Re, Wr, Ma)	% Higher Standard (Re, Wr, Ma)	
<b>Summary</b>	All Pupils	54	74%	2% <span style="color:red">-</span>	+12%	-3%
<b>Gender</b>	Male	28	75%	0%	+19% <span style="color:green">+</span>	-4%
	Female	26	73%	4%	+5%	-2%
<b>Prior Attainment</b>	Higher attainers	22	91%	5% <span style="color:red">-</span>	+6%	-4%
	Middle attainers	13	77%	0%	+4%	-4%
	Lower attainers	19	53% <span style="color:green">+</span>	0%	+25% <span style="color:green">+</span>	-1%
<b>Pupil Premium</b>	FSM (in last 6 years)	9	78%	0%	+15%	-4%
	Not FSM (in last 6 years)	45	73%	2% <span style="color:red">-</span>	+12%	-3%
<b>FSM</b>	FSM	5	80%	0%	+20%	-4%
	Not FSM	49	73%	2% <span style="color:red">-</span>	+11%	-3%
<b>Term of Birth</b>	Summer Term	19	68%	0%	+11%	-4%
	Spring Term	19	79%	0%	+20%	-4%
	Autumn Term	16	75%	6%	+4%	-0%
<b>SEN Group</b>	SEN Support	6	33%	0%	+7%	-1%
	EHC Plan	1	0%	0%	-8%	-0%
<b>EAL</b>	First language English	54	74%	2% <span style="color:red">-</span>	+12%	-3%
<b>Ethnicity</b>	White	54	74%	2% <span style="color:red">-</span>	+12%	-3%



# Subjects

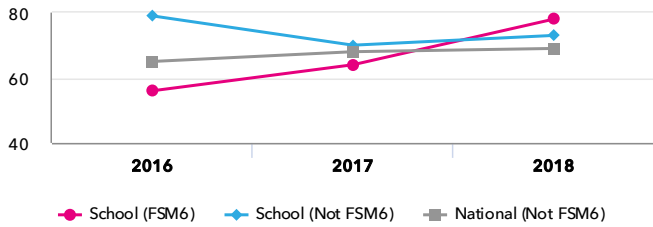
## KS1 subject performance 2018

	Actual results			Pupil progress			Actual results over time		
	2016	2017	2018	2016	2017	2018			
Number of Pupils / % Matched	42	44	54	100%	100%	100%			
<b>Reading</b>									
% Expected Standard +	74%	82%	85%	+6%	+10%	+11%	% Expected Standard + Reading chart 		
% Higher Standard	17%	18%	20%	-3%	+7%	+4%			
% Level 2+	-	-	-	-	-	-			
% Level 2B+	-	-	-	-	-	-			
% Level 3+	-	-	-	-	-	-			
Average Point Score	-	-	-	-	-	-			
<b>Writing</b>									
% Expected Standard +	76%	82%	78%	+16%+	+20%+	+11%	% Expected Standard + Writing chart 		
% Higher Standard	19%	16%	13%	+8%	+11%+	+5%			
% Level 2+	-	-	-	-	-	-			
% Level 2B+	-	-	-	-	-	-			
% Level 3+	-	-	-	-	-	-			
Average Point Score	-	-	-	-	-	-			
<b>Maths</b>									
% Expected Standard +	81%	86%	85%	+16%+	+16%+	+10%	% Expected Standard + Maths chart 		
% Higher Standard	17%	14%	17%	+6%	+4%	+4%			
% Level 2+	-	-	-	-	-	-			
% Level 2B+	-	-	-	-	-	-			
% Level 3+	-	-	-	-	-	-			
Average Point Score	-	-	-	-	-	-			
<b>Science</b>									
% Expected Standard +	88%	89%	94%+	-	-	-	% Expected Standard + Science chart 		
% Level 2+	-	-	-	-	-	-			
% Level 3+	-	-	-	-	-	-			
Average Point Score	-	-	-	-	-	-			

# Disadvantaged pupils

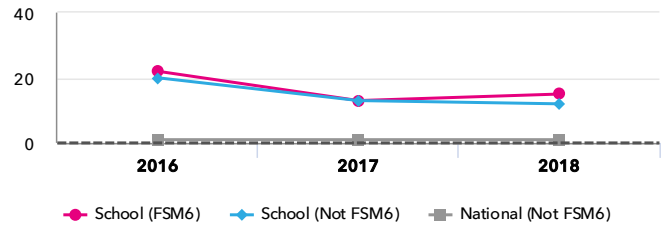
## KS1 attainment for disadvantaged pupils 2018

% Expected Standard + (Re, Wr, Ma)

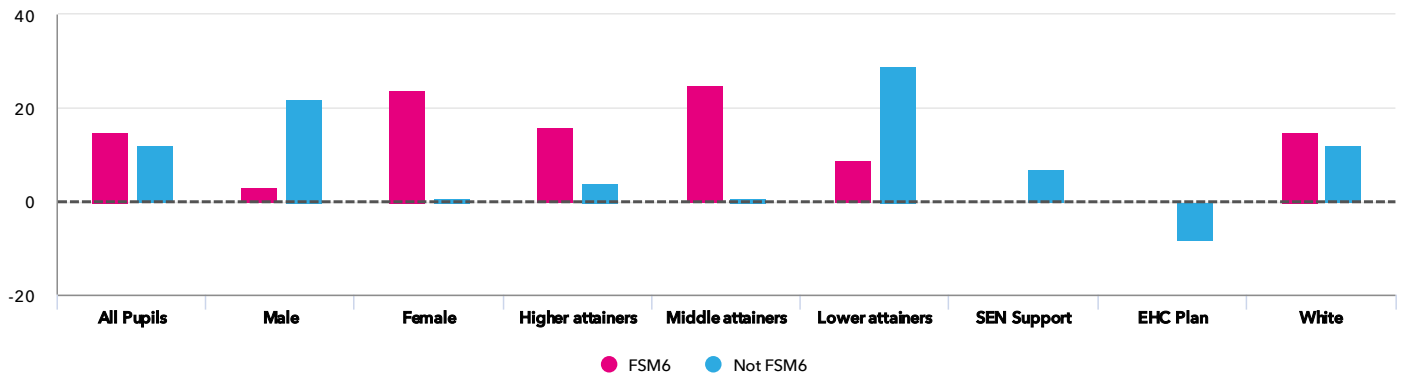


## KS1 progress for disadvantaged pupils 2018

% Expected Standard + (Re, Wr, Ma)



## Progress gap % Expected Standard + (Re, Wr, Ma)

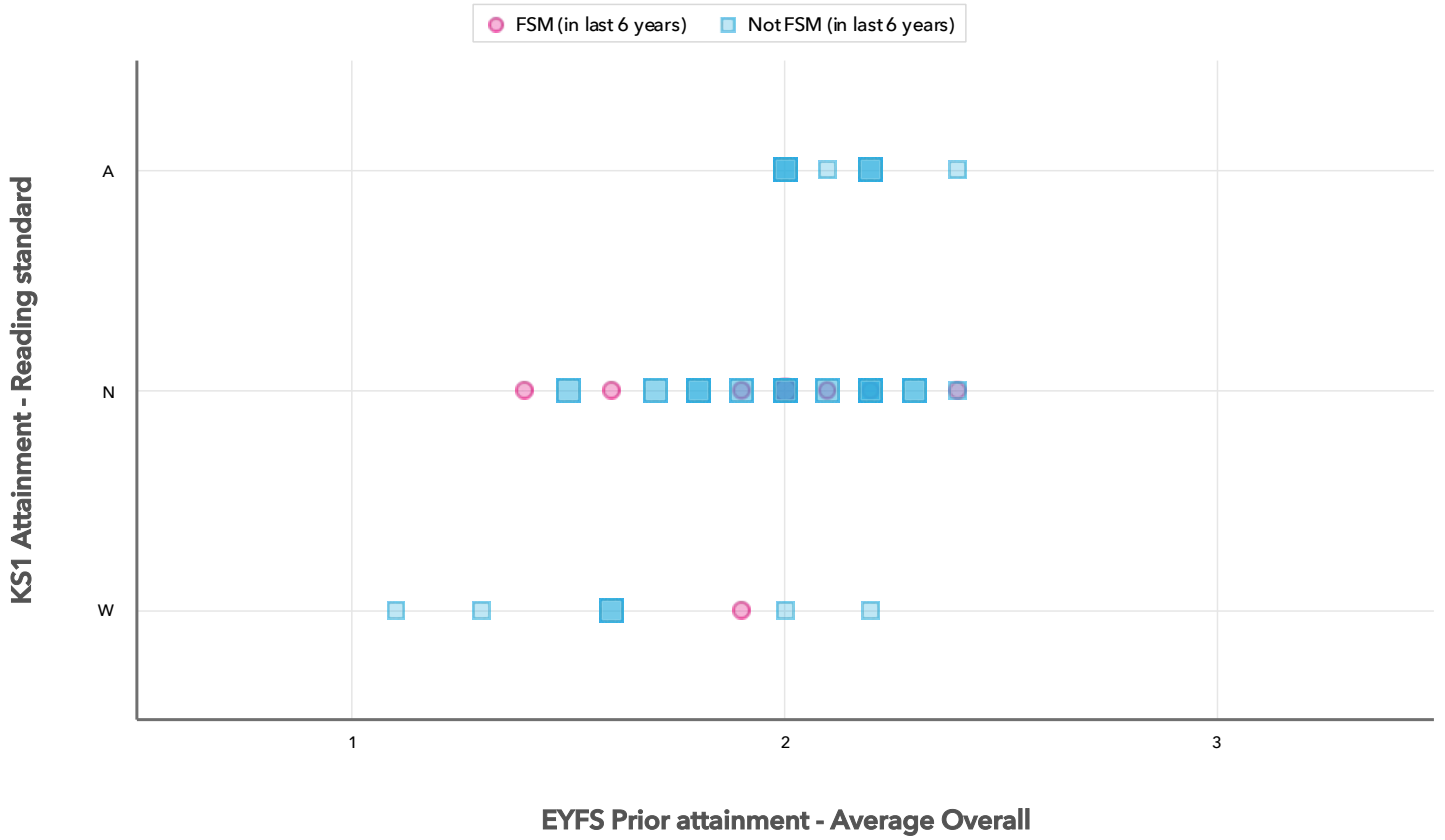


## Attainment & progress

Pupils	Attainment			Progress					
	% Expected Standard + (Re, Wr, Ma)			% Expected Standard + (Re, Wr, Ma)					
	FSM6	Not FSM6	Gap	FSM6	Not FSM6	Gap			
<b>Summary</b>	All Pupils	9	45	78%	73%	5%	15%	12%	3%
<b>Gender</b>	Male	4	24	75%	75%	0%	3%	22%	-19%
	Female	5	21	80%	71%	9%	24%	0%	24%
<b>Prior Attainment</b>	Higher attainers	3	19	100%	89%	11%	16%	4%	12%
	Middle attainers	2	11	100%	73%	27%	25%	0%	25%
	Lower attainers	4	15	50%	53%	-3%	9%	29%	-20%
<b>SEN Group</b>	SEN Support	-	6	-	33%	-	-	7%	-
	EHC Plan	-	1	-	0%	-	-	-8%	-
<b>Ethnic Group</b>	White	9	45	78%	73%	5%	15%	12%	3%

# Scatterplot

KS1 Pupil scatterplot 2018 54 pupils highlighted by Pupil Premium



## Context

## Context · Year 2 · 2017 / 2018

		Pupils	Proportion	
			School	National
<b>Summary</b>	All Pupils	54	100%	100%
<b>Gender</b>	Male	28	52%	51%
	Female	26	48%	49%
<b>Prior Attainment</b>	Higher attainers	22	41%	35%
	Middle attainers	13	24%	32%
	Lower attainers	19	35%	29%
<b>Pupil Premium</b>	FSM (in last 6 years)	9	17%	20%
	Not FSM (in last 6 years)	45	83%	79%
<b>FSM</b>	FSM	5	9%	14%
	Not FSM	49	91%	86%
<b>Term of Birth</b>	Summer Term	19	35%	34%
	Spring Term	19	35%	32%
	Autumn Term	16	30%	34%
<b>SEN Group</b>	SEN Support	6	11%	12%
	EHC Plan	1	2%	2%
<b>EAL</b>	First language English	54	100%	79%
<b>Ethnicity</b>	White	54	100%	74%

## Absence · Year 2 · 2017 / 2018

		Pupils	Absence		Persistent absentees	
			School	National	School	National
<b>Summary</b>	All Pupils	54	5%	4%	6%	8%
<b>Gender</b>	Male	28	4%	4%	4%	9%
	Female	26	6%	4%	8%	8%
<b>Prior Attainment</b>	Higher attainers	22	5%	3%	5%	4%
	Middle attainers	13	4%	4%	0%	7%
	Lower attainers	19	5%	6%	11%	14%
<b>Pupil Premium</b>	FSM (in last 6 years)	9	4%	6%	0%	17%
	Not FSM (in last 6 years)	45	5%	4%	7%	6%
<b>FSM</b>	FSM	5	4%	6%	0%	19%
	Not FSM	49	5%	4%	6%	7%
<b>Term of Birth</b>	Summer Term	19	4%	4%	0%	9%
	Spring Term	19	5%	4%	11%	8%
	Autumn Term	16	5%	4%	6%	8%
<b>SEN Group</b>	SEN Support	6	6%	6%	17%	15%
	EHC Plan	1	9%	8%	0%	26%
<b>EAL</b>	First language English	54	5%	4%	6%	8%
<b>Ethnicity</b>	White	54	5%	4%	6%	8%